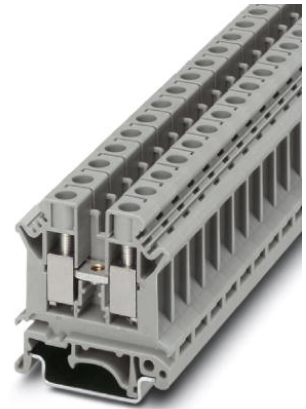


UK 10 N

Order No.: 3005073



<http://eshop.phoenixcontact.de/phoenix/treeViewClick.do?UID=3005073>

Universal terminal block with screw connection, cross section: 0.5- 10 mm², AWG: 20- 6, width: 10.2 mm



Commercial data	
EAN	4017918091019
Pack	50 Pcs.
Customs tariff	85369010
Weight/Piece	0.01726 KG
Catalog page information	Page 279 (CL-2007)

Product notes

WEEE/RoHS-compliant since:
01/01/2003



<http://www.download.phoenixcontact.com>
Please note that the data given here has been taken from the online catalog. For comprehensive information and data, please refer to the user documentation. The General Terms and Conditions of Use apply to Internet downloads.

Technical data

General

Number of levels	1
Number of connections	2
Color	gray

Insulating material	PA
Inflammability class acc. to UL 94	V0

Dimensions

Width	10.2 mm
Length	42.5 mm
Height NS 35/7,5	47 mm
Height NS 35/15	54.5 mm
Height NS 32	52 mm

Technical data

Maximum load current	76 A (with 16 mm ² conductor cross section)
Rated surge voltage	8 kV
Pollution degree	3
Surge voltage category	III
Insulating material group	I
Connection in acc. with standard	IEC 60947-7-1
Nominal current I _N	76 A
Nominal voltage U _N	800 V
Open side panel	ja

Connection data

Conductor cross section solid min.	0.5 mm ²
Conductor cross section solid max.	16 mm ²
Conductor cross section stranded min.	0.5 mm ²
Conductor cross section stranded max.	10 mm ²
Conductor cross section AWG/kcmil min.	20
Conductor cross section AWG/kcmil max	6
Conductor cross section stranded, with ferrule without plastic sleeve min.	0.5 mm ²
Conductor cross section stranded, with ferrule without plastic sleeve max.	10 mm ²
Conductor cross section stranded, with ferrule with plastic sleeve min.	0.5 mm ²
Conductor cross section stranded, with ferrule with plastic sleeve max.	6 mm ²
2 conductors with same cross section, solid min.	0.5 mm ²
2 conductors with same cross section, solid max.	4 mm ²

2 conductors with same cross section, stranded min.	0.5 mm ²
2 conductors with same cross section, stranded max.	4 mm ²
2 conductors with same cross section, stranded, TWIN ferrules with plastic sleeve, min.	0.5 mm ²
2 conductors with same cross section, stranded, TWIN ferrules with plastic sleeve, max.	6 mm ²
2 conductors with same cross section, stranded, ferrules without plastic sleeve, min.	0.5 mm ²
2 conductors with same cross section, stranded, ferrules without plastic sleeve, max.	2.5 mm ²
Cross-section with insertion bridge, solid max.	10 mm ²
Cross-section with insertion bridge, stranded max.	10 mm ²
Type of connection	Screw connection
Stripping length	10 mm
Internal cylindrical gage	B6
Screw thread	M4
Tightening torque, min	1.5 Nm
Tightening torque max	1.8 Nm

Certificates / Approvals

Approval logo



CSA

Nominal voltage U _N	600 V
Nominal current I _N	65 A
AWG/kcmil	24-6

CUL

Nominal voltage U _N	600 V
Nominal current I _N	65 A
AWG/kcmil	24-6

UL

Nominal voltage U _N	600 V
--------------------------------	-------

Nominal current I_N	65 A
AWG/kcmil	24-6
Certification	ABS, BV, CCA, CSA, CUL, DNV, GL, GOST, KEMA, KR, LR, NK, PRS, RS, UL

requested approbations

Certification Ex:	CUL-EX, FM, GL-EX, IECEx, KEMA-EX, UL-EX
-------------------	--

Accessories

Item	Designation	Description
Assembly		
3003224	ATP-UK	Separating plate, for visual and electrical separation of terminal groups, width: 1.5 mm, color: Gray
3022218	CLIPFIX 35	Snap-on end bracket, for 35 mm NS 35/7.5 or NS 35/15 mounting rail, can be fitted with Zack strip ZB 8 and ZB 8/27, terminal strip marker KLM 2 and KLM, width: 9.5 mm, color: gray
3003020	D-UK 4/10	Cover, width: 1.8 mm, color: gray
3003101	D-UK 4/10 BU	Cover, width: 1.8 mm, color: blue
1201442	E/UK	End clamp, for supporting the electronic base. If mounted vertically, 2 end clamps are required in each case
1201028	NS 32 AL UNPERF 2000MM	G rail 32 mm (NS 32)
1201280	NS 32 CU/120QMM UNPERF 2000MM	G-profile DIN rail, deep-drawn, material: Copper, unperforated, height 15 mm, width 32 mm, length 2 m
1201358	NS 32 CU/35QMM UNPERF 2000MM	G-profile DIN rail, material: Copper, unperforated, height 15 mm, width 32 mm, length 2 m
1201002	NS 32 PERF 2000MM	G-profile DIN rail, material: Steel, perforated, height 15 mm, width 32 mm, length 2 m
1201015	NS 32 UNPERF 2000MM	G-profile DIN rail, material: Steel, unperforated, height 15 mm, width 32 mm, length 2 m
0801762	NS 35/ 7,5 CU UNPERF 2000MM	DIN rail, material: Copper, unperforated, height 7.5 mm, width 35 mm, length: 2 m
0801733	NS 35/ 7,5 PERF 2000MM	DIN rail, material: Steel, perforated, height 7.5 mm, width 35 mm, length: 2 m
0801681	NS 35/ 7,5 UNPERF 2000MM	DIN rail, material: Steel, unperforated, height 7.5 mm, width 35 mm, length: 2 m
1201756	NS 35/15 AL UNPERF 2000MM	DIN rail, deep-drawn, high profile, unperforated, 1.5 mm thick, material: Aluminum, height 15 mm, width 35 mm, length 2 m
1201895	NS 35/15 CU UNPERF 2000MM	DIN rail, material: Copper, unperforated, 1.5 mm thick, height 15 mm, width 35 mm, length: 2 m
1201730	NS 35/15 PERF 2000MM	DIN rail, material: Steel, perforated, height 15 mm, width 35 mm, length: 2 m

1201714	NS 35/15 UNPERF 2000MM	DIN rail, material: Steel, unperforated, height 15 mm, width 35 mm, length: 2 m
1201798	NS 35/15-2,3 UNPERF 2000MM	DIN rail, material: Steel, unperforated, 2.3 mm thick, height 15 mm, width 35 mm, length: 2 m
0204110	STL 10N/5N	Step bracket, 2-pos.
1302215	TS-K	Separating plate, for electrical separation of neighboring bridges, can be fitted later, no loss of pitch, color: Gray

Bridges

0203153	EB 2-10	Insertion bridge, 2-pos., fully insulated
0203328	EB 3-10	Insertion bridge, 3-pos., fully insulated
0203137	EB 10-10	Insertion bridge, 10-pos., divisible, fully insulated
0203195	FB 2-10	Fixed bridge, 2-pos., divisible, with screws, screw heads without insulation
0203140	FB 3-10	Fixed bridge, for cross connections, with screws, screw heads without insulation, 3-pos.
0203182	FB 4-10	Fixed bridge, 4-pos.
0203179	FB 10-10	Fixed bridge, 10-pos., divisible, with screws, screw heads without insulation
0203247	FB 10-10-EX	Fixed bridge, 10-pos.
0203483	FBI 2-10	Fixed bridge, for cross connections, with screws, screw heads without insulation, 2-pos.
0203276	FBI 10-10	Fixed bridge, 10-pos., screw heads with insulating collar, divisible, with screws
0203205	KB- 10	Chain bridge, across any number of terminal blocks, 1-pos., with screw
0200062	SB 2- 8/13 N	Switching bridge, 2-pos.

Marking

1007248	SBS10:UNBEDRUCKT	Marker cards, unprinted, for individual labeling with the M-PEN, 250-section, perforated, white plastic
1004225	WS 4-10	Warning plate, with 2 plastic screws, across 4 terminal blocks, pitch 10 mm
1004429	WS 5-10	Warning plate, with 2 plastic screws, across 5 terminal blocks, pitch 10 mm
1050525	ZB10:SO/CMS	Zack strip, 10-section, divisible, special printing, marking according to customer requirements

Plug/Adapter

0310541	KSS 10	Short circuit connector, for short circuiting neighboring terminal blocks, can only be used with PSB or PSBJ, 2-pos., pitch: 10.2 mm, color: Black
---------	--------	--

0311647	PS-MT	Test plug, consisting of: metal part for 4 mm diameter socket hole and insulating sleeve for PS metal part
0303299	PSB 4/7/6	Test plug socket, not insulated, length: 7 mm, screw thread width: 4 mm, socket width: 6 mm
0303406	PSBJ 4/15/6 BK	Test plug socket, insulated, length: 15 mm, screw thread width: 4 mm, socket width: 6 mm, insulation material in black
0303354	PSBJ 4/15/6 BU	Test plug socket, insulated, length: 15 mm, screw thread width: 4 mm, socket width: 6 mm, insulation material in blue
0303419	PSBJ 4/15/6 FARBLOS	Test plug socket, insulated, length: 15 mm, screw thread width: 4 mm, socket width: 6 mm, insulation material transparent
0303370	PSBJ 4/15/6 GN	Test plug socket, insulated, length: 15 mm, screw thread width: 4 mm, socket width: 6 mm, insulation material in green
0303396	PSBJ 4/15/6 GY	Test plug socket, insulated, length: 15 mm, screw thread width: 4 mm, socket width: 6 mm, insulation material in gray
0303325	PSBJ 4/15/6 RD	Test plug socket, insulated, length: 15 mm, screw thread width: 4 mm, socket width: 6 mm, insulation material in red
0303383	PSBJ 4/15/6 VT	Test plug socket, insulated, length: 15 mm, screw thread width: 4 mm, socket width: 6 mm, insulation material in violet
0303312	PSBJ 4/15/6 WH	Test plug socket, insulated, length: 15 mm, screw thread width: 4 mm, socket width: 6 mm, insulation material in white
0303367	PSBJ 4/15/6 YE	Test plug socket, insulated, length: 15 mm, screw thread width: 4 mm, socket width: 6 mm, insulation material in yellow